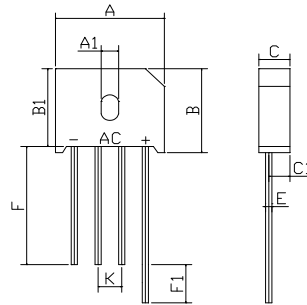


FEATURES

- Rating to 1000V PRV
- Surge overload rating to 200 Amperes peak
- Ideal for printed circuit board
- Reliable low cost construction utilizing molded plastic technique results in inexpensive product
- Lead solderable per MIL-STD-202 method 208



| KBU | | |
|----------------------|-------|-------|
| Dim | Min | Max |
| A | 22.80 | 23.20 |
| A1 | 3.70 | 4.10 |
| B | 18.90 | 19.30 |
| B1 | 17.60 | 18.00 |
| C | 6.55 | 6.85 |
| C1 | 4.50 | 4.80 |
| E | Ø1.20 | Ø1.40 |
| F | 25min | |
| F1 | 4min | |
| K | 4.70 | 5.30 |
| All Dimensions in mm | | |

Maximum Ratings (@TA = 25°C unless otherwise specified)

| Characteristic | Symbol | RS801 | RS802 | RS803 | RS804 | RS805 | RS806 | RS807 | UNITS |
|---|-------------|-------|-------|-------|-------|-------|-------|-------|------------------|
| Maximum recurrent peak reverse voltage | V_{RRM} | 50 | 100 | 200 | 400 | 600 | 800 | 1000 | V |
| Maximum RMS voltage | V_{RMS} | 35 | 70 | 140 | 280 | 420 | 560 | 700 | V |
| Maximum DC blocking voltage | V_{DC} | 50 | 100 | 200 | 400 | 600 | 800 | 1000 | V |
| Maximum average forward Output current @TA=25°C | $I_{F(AV)}$ | 8.0 | | | | | | | A |
| Peak forward surge current 8.3ms single half-sine-wave superimposed on rated load | I_{FSM} | 200 | | | | | | | A |
| I ² t Rating for fusing @Tj=25°C | I^2t | 165.9 | | | | | | | A ² S |

Thermal Characteristics

| | | | | | | | | | |
|--------------------------------------|-----------------|-----------------|--|--|--|--|--|--|------|
| Typical thermal resistance per leg | $R_{\theta JA}$ | 26 | | | | | | | °C/W |
| | $R_{\theta JC}$ | 3.4 | | | | | | | |
| Operating junction temperature range | T_J | - 55 ---- + 150 | | | | | | | °C |
| Storage temperature range | T_{STG} | - 55 ---- + 150 | | | | | | | °C |

Electrical Characteristics (@TA = 25°C unless otherwise specified)

| Characteristic | Symbol | RS801 | RS802 | RS803 | RS804 | RS805 | RS806 | RS807 | UNITS |
|--|--------|-------|-------|-------|-------|-------|-------|-------|-------|
| Maximum instantaneous forward voltage @4.0A | V_F | 1.0 | | | | | | | V |
| Maximum reverse current @TA=25°C at rated DC blocking voltage @TA=100°C | I_R | 10 | | | | | | | µ A |
| | | 1.0 | | | | | | | m A |



FIG.1 – TYPICAL FORWARD CURRENT DERATING CURVE

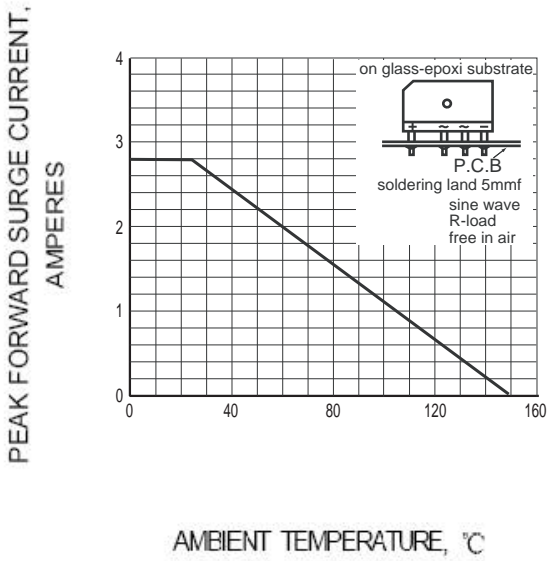


FIG.2 – MAXIMUM FORWARD SURGE CURRENT

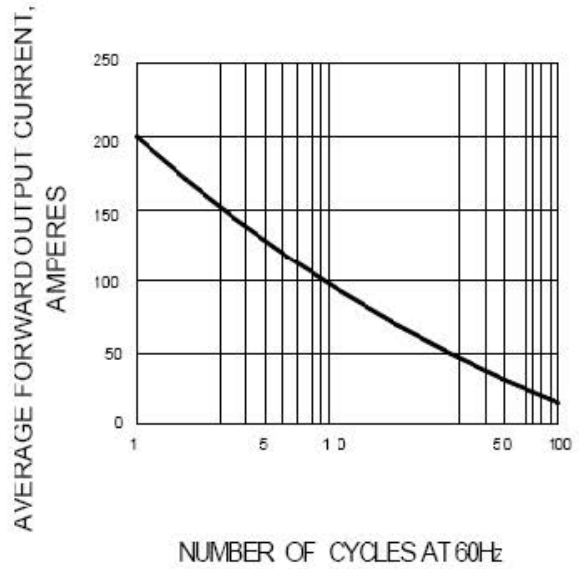


FIG.3 – TYPICAL FORWARD CHARACTERISTIC

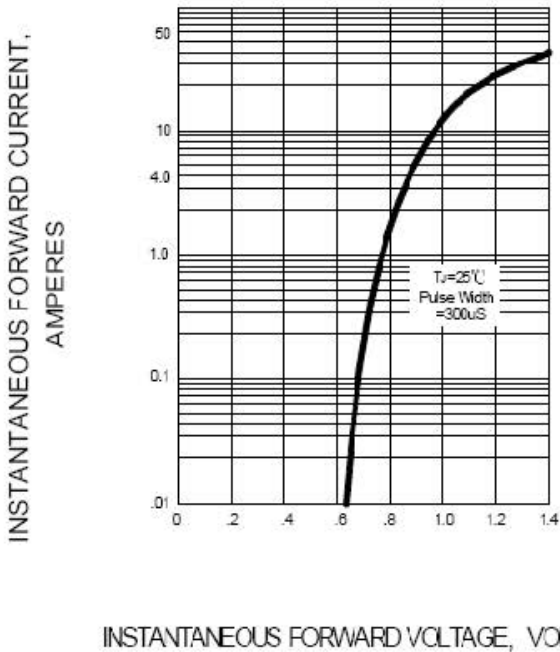
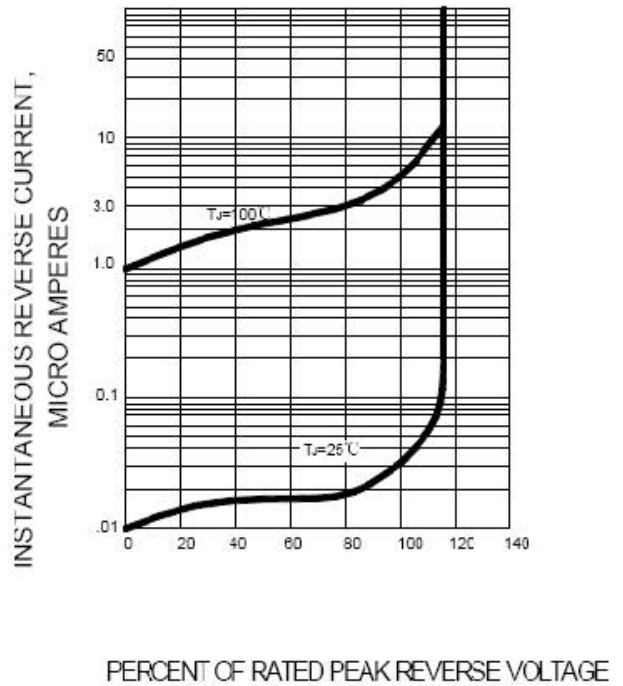


FIG.4 – TYPICAL REVERSE CHARACTERISTIC



| Device | Package | Shipping |
|-------------|---------|---------------|
| RS801-RS807 | KBU | 400 Units/Box |